

**NEW**

Products with a  
polyurethane cable  
in a striking  
orange colour

Made in Germany  


## CAMPING/CARAVAN

with the right power supply



## RANGE

- 3-5** Cable reels
- 5** Bag for cable reels
- 6-8** Camping sets
- 8-10** Extensions
- 11** Bag for extensions
- 12-13** Adapter cords
- 14-15** International adapter cords
- 16** Camping accessories
- 17** Gas detectors
- 18-19** Energy meters
- 20-21** Power combination units
- 22** Cable boxes
- 23** Multi socket outlets
- 24-25** STECKY power combination units
- 26** CEE plugs
- 27** CEE connectors
- 28-29** Power supply inlets
- 30-32** Flanged sockets
- 33** Protective devices and cables
- 33** Power cords
- 34** Caravan adapters
- 35** Caravan adapter cords
- 36** Caravan circuit tester
- 37-39** Camping lighting

# NO POWER IN YOUR CARAVAN?

If the **red LED** at the plug and connector is glowing, the **cable is live**.

Shorten the troublesome search for the error with a glance at our voltage indicator!



**powerlight**  
Voltage indicator

## Progress for greater camping pleasure

You can purchase our camping products with our innovative 'powerlight' plugs and connectors with voltage indicator right now.

Look for the powerlight symbol.

**powerlight** CEE plug  
230 V, 16 A, 3-pole  
Art. no. 61486  
Page 26



**powerlight** CEE connector  
230 V, 16 A, 3-pole  
Art. no. 61487  
Page 27



**powerlight**  
Voltage indicator



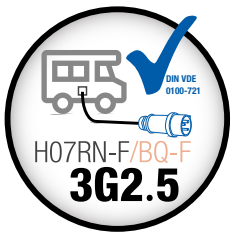
**as**<sup>®</sup>  
**Schwabe**  
TechnikProdukte

# CAMPING

## The right power supply with as - Schwabe



If you want to spend your camping holiday without nasty surprises, check that your equipment is complete and is functioning correctly before departure. The electrical equipment is one of the most important and must meet the campsites standards. This catalogue shows the authorized products (✓).



### STANDARDS

Electrical standards for power supply on Camping sites, Campervans, motorhomes or mobile homes have to be respected. According to the DIN Standard VDE 0100-721, heavy-duty rubber cables of type **H07RN-F** (or a higher quality), such as the **H07BQ-F polyurethane cable in a striking orange colour**, with a **cable cross-section of 2.5 mm<sup>2</sup>** (3G2.5) are required. Further, the permitted **maximum length of 25 m cord plus an adapter cord of 1.5 m**, if necessary, must not be exceeded.

These requirements are an integral part of all **camp site regulations**. If you fail to comply, the camp site owner may ask you to **rent** or **purchase** a cable on site. If you refuse the campsite operator's request, **you may be denied access to electricity**. If you manage to connect to the electricity without authorisation, your action may be liable to prosecution and you would normally be **expelled** from the campsite.

Compliance with the regulations described above is essential for your insurance. For example, cable cross-sections that are too small can lead to fire as a result of an excessive electricity load. If damage to your mobile home or the campsite results from **illegal cables**, your **insurance protection will be rendered void** and you will be liable for the damage and responsible for any costs.



### OUR RECOMMENDATION

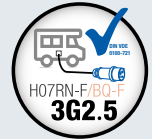
Considering the **safety aspects** related to electric current, the use of electrical products with **cable lengths of less than 1.5 m** is not recommended. Such cable lengths make it possible to connect extensions to high wall-mounted socket outlets or power supply inlets and **to place the cable with connector on the ground beneath the vehicle, for example**.

The advantage is that there is no tensile stress on the connection between the plug and connector after connecting a consumer. In addition, the power supply inlet is not loaded. Indeed, tensile stress should always be avoided on these two connections, since in the worst case, **loose contact connections** can cause **socket fires**. **Short circuits** can also **damage** the connected devices. If you want to be on the safe side, consider our recommendation and only use products with a minimum cable length of 1.5 m.

# Camping cable reels


## Technical data

- Reel body made from robust, shatterproof special plastic
- With thermo switch and cable guide
- With a black rubber power cable or polyurethane cable in a striking orange colour
- Cable clip to fix the cable on the housing
- Suitable for permanent outdoor use
- Tested in accordance with EN 61242, DIN VDE 0620-2-1, DIN EN 50525-2, IEC 60309
- **IP44**: protected against foreign bodies and splash-proof



## Xperts camping cable reel with 'powerlight' voltage indicator




- With stable, shock-absorbing **X** double-tube frame with star-grip brake, especially suitable for uneven ground
- Frame with ergonomic non-slip 2-component handle
- CEE plug 230 V, 16 A, 3-pole with 'powerlight' voltage indicator
- 2x 230 V shock-proof socket outlets, splash-proof  and 1x CEE socket with flap lid 230 V, 16 A, 3-pole

Version	Ø mm	PU	EAN	Art. no.
25 m black rubber power cable H07RN-F 3G2.5	285	1/48	4011160221767	22176

## Camping cable reel with 'powerlight' voltage indicator



- Shock-absorbing, stable, galvanised foot frame with parking brake
- Ergonomic handle
- CEE plug 230 V, 16 A, 3-pole with 'powerlight' voltage indicator
- 2x 230 V shock-proof socket outlets, splash-proof  and 1x CEE socket with flap lid 230 V, 16 A, 3-pole

Version	Ø mm	PU	EAN	Art. no.
25 m black rubber power cable H07RN-F 3G2.5	285	1/60	4011160101762	10176
25 m orange polyurethane cable H07BQ-F 3G2.5	285	1/60	4011160101700	10170



Bag for cable reel  
Art. no. 12279, page 5

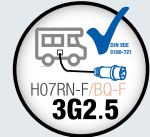


Cable in a striking colour

# Camping cable reels

## Technical data

- Reel body made from robust, shatter-proof special plastic with ergonomic handle
- Shock-absorbing, stable, galvanised foot frame with parking brake
- With thermo switch and cable guide
- With a black rubber power cable or polyurethane cable in a striking orange colour
- Cable clip to fix the cable on the housing
- Suitable for permanent outdoor use
- Tested in accordance with EN 61242, DIN VDE 0620-2-1, DIN EN 50525-2, IEC 60309
- **IP44:** protected against foreign bodies and splash-proof



## Camping extension reel with 'powerlight' voltage indicator



- CEE plug 230 V, 16 A, 3-pole with 'powerlight' voltage indicator
- 1.5 m power cord with 1x CEE connector with flap lid 230 V, 16 A, 3-pole with 'powerlight' voltage indicator

Version	Ø mm	PU	EAN	Art. no.
25 m black rubber power cable H07RN-F 3G2.5	285	1/80	4011160122705	12270



Bag for cable reel  
Art. no. 12279, page 5



- CEE plug 230 V, 16 A, 3-pole with 'powerlight' voltage indicator
- 1.5 m power cord with 1x CEE connector with flap lid 230 V, 16 A, 3-pole with 'powerlight' voltage indicator
- with 1x shock-proof socket outlet, splash-proof



Version	Ø mm	PU	EAN	Art. no.
25 m orange polyurethane cable H07BQ-F 3G2.5	285	1/80	4011160122729	12272



Bag for cable reel  
Art. no. 12279, page 5

Cable in a striking colour



- CEE plug 230 V, 16 A, 3-pole with 'powerlight' voltage indicator
- 1.5 m power cord with CEE angled connector with flap lid (230 V, 16 A, 3-pole) and shock-proof socket outlet with flap lid (230 V, 16 A)



Version	Ø mm	PU	EAN	Art. no.
25 m black rubber power cable H07RN-F 3G2.5	285	1/80	4011160122743	12274
25 m orange polyurethane cable H07BQ-F 3G2.5	285	1/80	4011160122767	12276



Bag for cable reel  
Art. no. 12279, page 5



Cable in a striking colour



## The all-weather protective bag against dirt and rain!

- Made of resistant, dust- and splash-proof outdoor material
- Easy-care outer material, easy to wash
- Zipper with dust- and splash-proof protective coating and four sliders
- Practical strap with a buckle clip on the top
- Easy packing of the cable reel as the bag can be opened completely
- Pre-punched slots on both sides to pull the cables through
- Pocket size: height 390 mm, width 330 mm, depth 210 mm
- Suitable for permanent outdoor use Suitable for camping cable reels with the article no. 10170, 10173, 10176, 12270, 10231, 12272, 12274, 12276

Version	Colour	PU	EAN	Art. no.
Bag for camping cable reels	Grey	1	4011160122798	12279

### Details overview:



**Zipper** with all-weather-resistant protective coating and four sliders.



**Carrying strap with buckle clip** for easy transportation.



**Rain protection tabs** over **pre-punched opening slots** for inserting the power cord.



**Easy packing** of the cable reel with 270° all-around zipper at the front and back of the bag.




**Simple connection** of loads thanks to four zipper sliders.



**Practical cable openings** on both sides of the bag for inserting cables.

### Cable reel



- Shock-proof plug 230 V, 16 A
- 3x shock-proof socket outlets, splash-proof 

Version	Ø mm	PU	EAN	Art. no.
25 m black rubber power cable H07RN-F 3G2.5	285	1/80	4011160102318	10231



Bag for cable reel  
Art. no. 12279, page 5



# CAMPING DUO +

WITH ORANGE POLYURETHANE CABLE

NEW

**Set consists of:**

- CEE camping cable reel (art. no. 10170)  
25 m orange polyurethane cable H07BQ-F 3G2.5  
with CEE plug with 'powerlight' voltage indicator, 1 CEE socket outlet and 2 shock-proof socket outlets with safety flap lids
- 1.5 m extension H07BQ-F 3G2.5 (art. no. 62430)  
with CEE plug and CEE connector with flap lid with 'powerlight' voltage indicator, incl. hook-and-loop tape with metal strip for hanging

powerlight  
Voltage indicator

Made in Germany



Cable in a striking colour

EAN: 4011160197048  
art. no. 19704







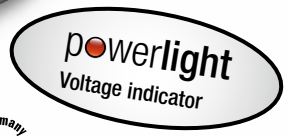
**CAMPING TEAM +  
WITH ORANGE POLYURETHANE CABLE**

**NEW**

**Set consists of:**

- **Protective bag** for extensions (art. no. 12278)
- **25 m extension H07BQ-F 3G2.5** (art. no. 62433) with CEE plug and CEE connector with flap lid with 'powerlight' voltage indicator, incl. hook-and-loop tape with metal strip for hanging
- **1.5 m adapter cord H07BQ-F 3G2.5** (art. no. 62434) with shock-proof plug and CEE connector with flap lid with 'powerlight' voltage indicator, incl. hook and loop tape with metal strip for hanging
- **1.5 m adapter cord H07BQ-F 3G2.5** (art. no. 62435) with CEE plug with 'powerlight' voltage indicator and shock-proof connector with protective cap, incl. hook-and-loop tape with metal strip for hanging
- **LED torch XT1** (art. no. 42804)

EAN: 4011160197062  
Art. no. 19706

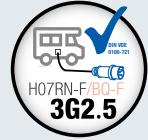


**Cable in a striking colour**

# CEE extensions

## Technical data

- With heavy-duty rubber power cable H07RN-F 3G2.5
- Incl. hook-and-loop tape with metal strip for hanging
- Tested in accordance with DIN VDE 0620-2-1, IEC 60309, DIN EN 50525-2
- **IP44:** protected against foreign bodies and splash-proof



## CEE extension cable with 'powerlight' voltage indicator



**BEST  
SELLER**

- 1x CEE plug 230 V, 16 A, 3-pole with 'powerlight' voltage indicator
- 1x CEE angled connector 230 V, 16 A, 3-pole and  
1x shock-proof socket outlet 230 V, 16 A, waterproof IP44, with flap lid
- Incl. hook-and-loop tape with metal strip for hanging

Cable length	PU	EAN	Art. no.
1.5 m black rubber power cable H07RN-F 3G2.5	1	4011160614033	61403

## CEE extensions with PRCD safety switch



- Extension with RCD protection 30mA
- RCD with undervoltage release as protection against electric voltage
- 1x CEE plug 230 V, 16 A, 3-pole with 'powerlight' voltage indicator
- 1x CEE connector with flap lid 230 V, 16 A, 3-pole with 'powerlight' voltage indicator

Cable length	PU	EAN	Art. no.
2x 1.5 m black rubber power cable H07RN-F 3G2.5	1	4011160452246	45224



Bag for extension  
Art. no. 12278, page 11

# CAMPING DUO WITH BLACK RUBBER POWER CABLE

## Set consists of:

- **CEE camping cable reel** (art. no. 10176)  
25 m heavy-duty rubber power cable H07RN-F 3G2.5 with CEE plug with 'powerlight' voltage indicator, 1 CEE socket outlet and 2 shock-proof socket outlets with safety flap lids
- **1.5 m extension H07RN-F 3G2.5** (art. no. 61402)  
with CEE plug and CEE connector with flap lid with 'powerlight' voltage indicator, incl. hook-and-loop tape with metal strip for hanging



**BEST  
SELLER**

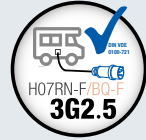


EAN: 4011160197031  
Art. no. 19703

# CEE extensions

## Technical data

- With a black rubber power cable or polyurethane cable in a striking orange colour
- Incl. hook-and-loop tape with metal strip for hanging
- Tested in accordance with IEC 60309, DIN EN 50525-2
- **IP44**: protected against foreign bodies and splash-proof



## CEE extension cables with 'powerlight' voltage indicator



- 1x CEE plug 230 V, 16 A, 3-pole with 'powerlight' voltage indicator
- 1x CEE connector with flap lid 230 V, 16 A, 3-pole with 'powerlight' voltage indicator
- Incl. hook-and-loop tape with metal strip for hanging

### Cable length

Cable length	PU	EAN	Art. no.
1.5 m black rubber power cable H07RN-F 3G2.5	1	4011160614026	61402
5 m black rubber power cable H07RN-F 3G2.5	1	4011160614019	61401
10 m black rubber power cable H07RN-F 3G2.5	1	4011160614071	61407
25 m black rubber power cable H07RN-F 3G2.5	1	4011160614095	61409



Bag for extension  
Art. no. 12278, page 11



### Cable length

Cable length	PU	EAN	Art. no.
1.5 m orange polyurethane cable H07BQ-F 3G2.5	1	4011160624308	62430
5 m orange polyurethane cable H07BQ-F 3G2.5	1	4011160624315	62431
10 m orange polyurethane cable H07BQ-F 3G2.5	1	4011160624322	62432
25 m orange polyurethane cable H07BQ-F 3G2.5	1	4011160624339	62433



Bag for extension  
Art. no. 12278, page 11

Cable in a striking colour

Finger weg! Das gehört Carlo Camper!

Camping, Cars und Caravan: Ihr Ausstatter für alle Fälle

Camping-Shop Musterstraße 10 12345 Musterstadt Tel.01234/56789

Besuchen Sie uns bald wieder: Campingplatz Kuckucksnest im Schwarzwald

## Your Camping equipment with individually labelled cables

Do you want your **cable reels and extensions** to advertise your company when being used on the campsite? With our cable labelling service, they can do just that.

We can print the cables for your required products to meet your exact specifications. Whether it is the **name and address of a campsite or a link to your website** – labelling will increase your advertising impact and ensure more visitors. A labelled cable also has the advantage of raising the **psychological barrier to theft** and thus protects your property. And **visitors will no longer mistake your property for theirs**.

Take advantage of our cable labelling service now.

### Here's how it works:

Select the products from this catalogue that you would like us to label for you.

The **minimum purchase amount** is **100 m cable length**, consisting of a combination of any lengths, e.g.:

- Four cable reels each containing 25 m of cable
- Ten extensions each 10 m in length
- Two cable reels each containing 25 m of cable and five extensions each 10 m in length

For black cables, your chosen lettering is printed in **silver grey** printing ink and, for orange cables, **black** printing ink is used. The printing inks we use have a high durability and are largely abrasion-resistant. We deliver your printed cables just a few days following printing approval.

Order your customised cable labelling now  
**art no. 61000** (per metre)





## The all-weather protective bag against dirt and rain!

- Protects extensions against dirt and rain
- Made of resistant, dust- and splash-proof outdoor material
- Easy-care outer material, easy to wash
- Zip with all-weather-resistant protective coating
- Easy packing of the extension as the bag can be opened completely
- Pocket size: diameter 360mm , depth 110mm
- Bag with long and elastic handle
- Suitable for permanent outdoor use and easy to wash
- Suitable for extension cables up to 25 m long 3G2.5

	Colour	PU	EAN	Art. no.
Bag for extensions	Grey	1	4011160122781	12278

### Details overview:



**Stable carrying strap** for easy transport.



**Zipper** with dust- and splash-proof protective coating.



**Wide opening** for easy stowing of extension cable.

## CAMPING TEAM WITH BLACK RUBBER POWER CABLE



### Set consists of:

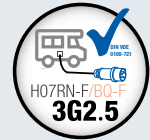
- **Protective bag** for extensions (art. no. 12278)
- **25 m extension H07RN-F 3G2.5** (art. no. 61409) with CEE plug and CEE connector with flap lid with 'powerlight' voltage indicator, incl. hook-and-loop tape with metal strip for hanging
- **1.5 m adapter cord H07RN-F 3G2.5** (art. no. 61406) with shock-proof plug and CEE connector with flap lid with 'powerlight' voltage indicator, incl. hook-and-loop tape with metal strip for hanging
- **1.5 m adapter cord H07RN-F 3G2.5** (art. no. 61408) with CEE plug with 'powerlight' voltage indicator and shock-proof connector with protective cap, incl. hook-and-loop tape with metal strip for hanging
- **LED torch XT1** (art. no. 42804)



EAN: 4011160197055  
Art. no. 19705



# CEE adapter cords



## Technical data

- With a black rubber power cable or polyurethane cable in a striking orange colour
- Incl. hook-and-loop tape with metal strip for hanging
- Tested in accordance with DIN VDE 0620-2-1, IEC 60309, DIN EN 50525-2
- **IP44:** protected against foreign bodies and splash-proof

## CEE adapter cords with 'powerlight' voltage indicator



**BEST  
SELLER**



- 1x shock-proof plug 230 V, 16 A
- 1x CEE connector with flap lid 230 V, 16 A, 3-pole with 'powerlight' voltage indicator
- Incl. hook-and-loop tape with metal strip for hanging

### Cable length

Cable length	PU	EAN	Art. no.
1.5 m black rubber power cable H07RN-F 3G2.5	1	4011160614064	61406
1.5 m orange polyurethane cable H07BQ-F 3G2.5	1	4011160624346	62434

**NEW**



Cable in a striking colour

**BEST  
SELLER**



- 1x CEE plug 230 V, 16 A, 3-pole with 'powerlight' voltage indicator
- 1x shock-proof connector with protective cap 230 V, 16 A
- Incl. hook-and-loop tape with metal strip for hanging

### Cable length

Cable length	PU	EAN	Art. no.
1.5 m black rubber power cable H07RN-F 3G2.5	1	4011160614088	61408
1.5 m orange polyurethane cable H07BQ-F 3G2.5	1	4011160624353	62435

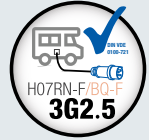
**NEW**



Cable in a striking colour



# CEE adapter cords



## Technical data

- With a black rubber power cable or polyurethane cable in a striking orange colour
- Incl. hook-and-loop tape with metal strip for hanging
- Tested in accordance with DIN VDE 0620-2-1, IEC 60309, DIN EN 50525-2
- **IP44**: protected against foreign bodies and splash-proof

## CEE adapter cords



- 1x shock-proof plug 230 V, 16 A
- 1x CEE connector 230 V, 16 A, 3-pole with flap lid
- Incl. hook-and-loop tape with metal strip for hanging

Cable length	PU	EAN	Art. no.
1.5 m black rubber power cable H07RN-F 3G2.5	1	4011160614835	61483

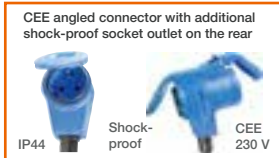


- 1x shock-proof plug 230 V, 16 A
- 1x CEE angled connector 230 V, 16 A, 3-pole and 1x shock-proof socket outlet 230 V, 16 A, waterproof with flap lid
- Incl. hook-and-loop tape with metal strip for hanging

Cable length	PU	EAN	Art. no.
1.5 m black rubber power cable H07RN-F 3G2.5	1	4011160604836	60483
1.5 m orange polyurethane cable H07BQ-F 3G2.5	1	4011160624360	62436



Cable in a striking colour



- 1x CEE plug 400 V, 16 A, 5-pole
- 1x CEE connector with flap lid 230 V, 16 A, 3-pole with 'powerlight' voltage indicator
- Incl. hook-and-loop tape with metal strip for hanging



Cable length	PU	EAN	Art. no.
1.5 m black rubber power cable H07RN-F 3G2.5	1	4011160613913	61391



# International CEE adapter cords

**NEW:**  
With CEE plugs and connectors with **powerlight** voltage indicator



## British standard



Cable in a striking colour

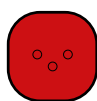
Type G



- With 1.5 m orange PVC cable H05VV-F 3G1.5
- Incl. hook-and-loop tape with metal strip for hanging

Version	PU	EAN	Art. no.
British standard plug BS1363 (250 V, 13 A, 3-pole) and CEE connector with flap lid (230 V, 16 A, 3-pole) with 'powerlight' voltage indicator	1	4059948002863	660486
CEE connector (230 V, 16 A, 3-pole) with 'powerlight' voltage indicator and British Standard BS1363 connector (250 V, 13 A, 3-pole)	1	4059948002870	660488

## Swiss standard



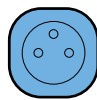
Type J



- With 1.5 m black rubber power cable H07RN-F 3G2.5
- Incl. hook-and-loop tape with metal strip for hanging

Version	PU	EAN	Art. no.
SEV plug type 12 (230 V, 10 A, 3-pole) and CEE connector with flap lid (230 V, 16 A, 3-pole, max. load 10 A) with 'powerlight' voltage indicator	1	4059948003990	760486
CEE connector (230 V, 16 A, 3-pole) with 'powerlight' voltage indicator and SEV connector type 23 with protective cap (230 V, 16 A, 3-pole)	1	4059948004393	761488

## French standard



Type E



- With 1.5 m black rubber power cable H07RN-F 3G2.5
- Incl. hook-and-loop tape with metal strip for hanging

Version	PU	EAN	Art. no.
NF plug (230 V, 16 A) and CEE connector with flap lid (230 V, 16 A, 3-pole) with 'powerlight' voltage indicator	1	4011160614064	61406
CEE connector (230 V, 16 A, 3-pole) with 'powerlight' voltage indicator and NF connector with protective cap (230 V, 16 A)	1	4059948004775	861408

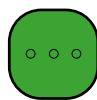


Cable in a striking colour

- With 1.5 m orange polyurethane cable H07BQ-F 3G2.5
- Incl. hook-and-loop tape with metal strip for hanging

Version	PU	EAN	Art. no.
NF plug (230 V, 16 A) and CEE connector with flap lid (230 V, 16 A, 3-pole) with 'powerlight' voltage indicator	1	4011160624346	62434
CEE connector (230 V, 16 A, 3-pole) with 'powerlight' voltage indicator and NF connector with protective cap (230 V, 16 A)	1	4059948004997	862435

## Italian standard



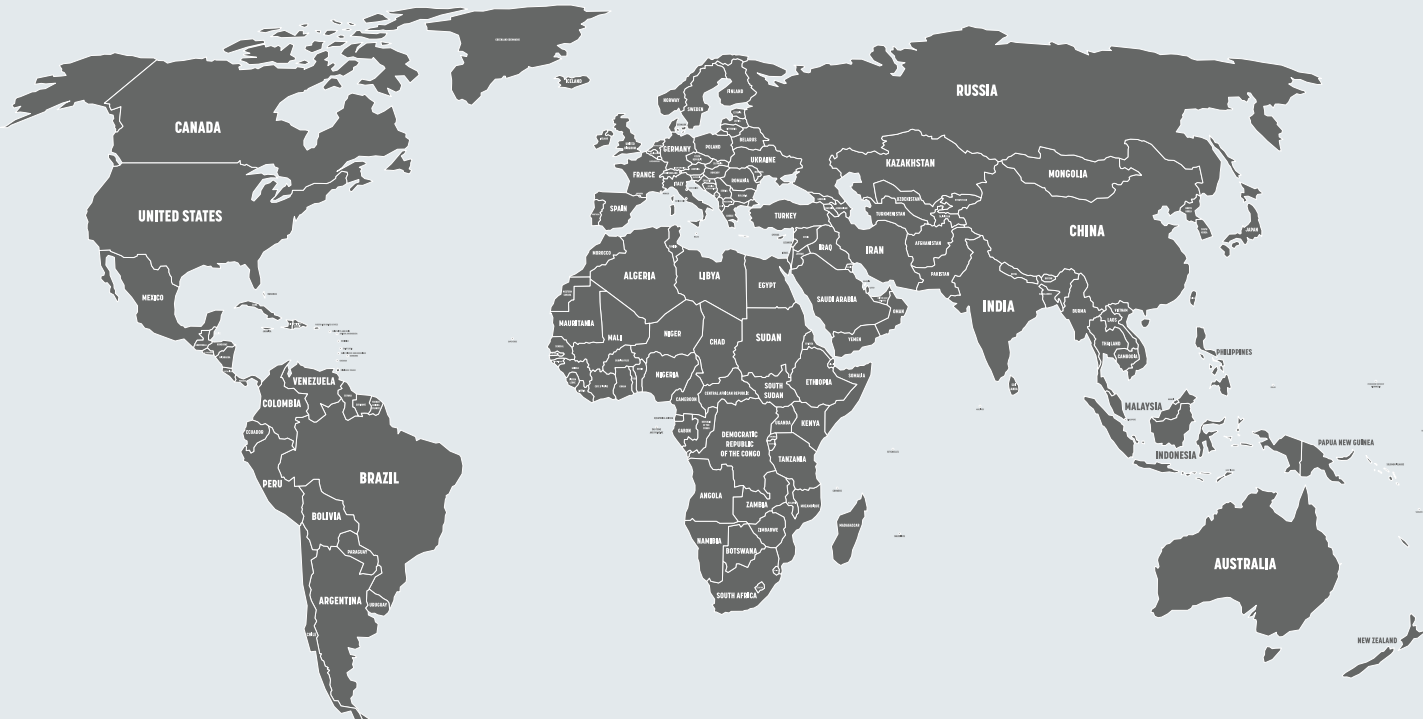
Type L



- With 1.5 m black rubber power cable H07RN-F 3G1.5
- Incl. hook-and-loop tape with metal strip for hanging

Version	PU	EAN	Art. no.
Italian plug type L (16 A) and CEE connector with flap lid (230 V, 16 A, 3-pole) with 'power light' voltage indicator	1	4059948002979	360486
CEE plug (230 V, 16 A, 3-pole) and Italian outlet type L (230 V, 10-16 A) with 'powerlight' voltage indicator	1	4059948002986	360488



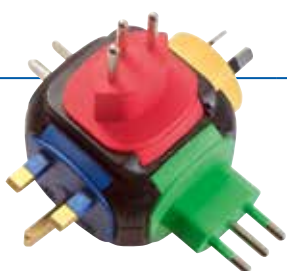


## Country overview per connector standard

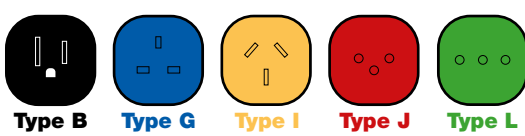
As some countries use several connector systems, we cannot present a binding overview. Please inform yourself in detail which type you need before you start your journey.

<b>Type B</b>	<b>Type E</b>	<b>Type F</b>	<b>Type G</b>	<b>Type I</b>	<b>Type J</b>	<b>Type L</b>
<ul style="list-style-type: none"> <li>Ecuador</li> <li>Japan</li> <li>Canada</li> <li>Colombia</li> <li>Cuba</li> <li>Mexico</li> <li>Panama</li> <li>Philippines</li> <li>Taiwan</li> <li>Thailand</li> <li>USA</li> <li>Venezuela</li> </ul>	<ul style="list-style-type: none"> <li>Belgium</li> <li>France</li> <li>Morocco</li> <li>Monaco</li> <li>Poland</li> <li>Slovakia</li> <li>Czech Republic</li> <li>Tunisia</li> </ul>	<ul style="list-style-type: none"> <li>Bulgaria</li> <li>Denmark</li> <li>Germany</li> <li>Finland</li> <li>Greece</li> <li>Croatia</li> <li>Netherlands</li> <li>Norway</li> <li>Austria</li> <li>Portugal</li> <li>Russia</li> <li>Sweden</li> <li>Spain</li> <li>Turkey</li> </ul>	<ul style="list-style-type: none"> <li>Abu Dhabi</li> <li>Dubai</li> <li>Great Britain</li> <li>Gambia</li> <li>Ghana</li> <li>Hong Kong</li> <li>India</li> <li>Iraq</li> <li>Ireland</li> <li>Northern Ireland</li> <li>Scotland</li> <li>Singapore</li> <li>Wales</li> <li>Cyprus</li> </ul>	<ul style="list-style-type: none"> <li>Argentina</li> <li>Australia</li> <li>China</li> <li>New Zealand</li> <li>Samoa</li> <li>Uruguay</li> </ul>	<ul style="list-style-type: none"> <li>Switzerland</li> <li>Liechtenstein</li> </ul>	<ul style="list-style-type: none"> <li>Ethiopia</li> <li>Chile</li> <li>Italia</li> <li>San Marino</li> <li>Vatican City</li> </ul>

### Travel adapter STECKY



For use in more than 100 countries



#### Versions for indoor household appliances

- 5 easily interchangeable country-specific modules
- For safe connection of different plugs
- With ground wire bracket and space-saving travel case

PU	EAN	Art. no.
1	4011160902512	90251

## CEE safety box



**BEST SELLER**

- Reliable impact protection and moisture protection for plugs and connectors
- Impossible for plugs and connectors to be accidentally disconnected
- With a solid lock and three keys
- According to its green colour, the safety box is not visible in hedges or grass
- Length: 360 mm, Ø 85 mm
- **IP44**: protected against foreign bodies and splash-proof

Version	PU	EAN	Art. no.
Safety box for CEE plugs 230 V, 16 A, 3-pole	1	4011160487088	48708

## Cable winder



- Cable winder for keeping your extensions or cords neat and tidy when storing them
- for max. 15 m heavy-duty rubber cable H07RN-F 3G2.5 or orange polyurethane cable H07BQ-F 3G2.5
- Provided with two loops
- Featuring a plug storage holder and two hanging rings e.g. shock-proof plug and CEE plug 230 V

Version	Colour	PU	EAN	Art. no.
Cable winder for max. 15 m cable	Blue	1	4011160487095	48709



# NARCOTIC GAS DETECTOR FOR GREATER SAFETY WHEN CAMPING



## PROTECT YOURSELF AGAINST

- **Anaesthetisation**  
by thieves with narcotic gas while you are sleeping.
- **Poisoning**  
from gas leaking from the gas bottle for the hob

‘ ALARM ’ NARCOTIC GAS • PROPANE GAS • BUTANE GAS ‘ ALARM ’



## Narcotic gas detector H-AL 8300

**NEW**



- Gas detector provides a warning of propane, butane, and ether (narcotic gases)
- Suitable for use in caravans and lorry driver cabs
- Installation from 70-110 cm above the floor
- With LED function display: Power (green), Error (yellow), Alarm (red)
- With electrochemical sensor
- Signal tone with additional flashing LED
- Connection via USB-C cable (included)
- Can also be operated with a power bank.
- **IP20:** for indoor use

Version	PU	EAN	Art. no.
H-AL 8300	1	4011160904189	90418



## MIXO ENERGY METERS

### CONTROL OF POWER CONSUMPTION

To avoid bad surprises at the end of your camping trip, always check your power consumption by using the MIXO energy meter.

### EASY INSTALLATION

To correctly record the measured values, connect the energy meter between the power supply and your mobile home. The energy measurement will start as soon as you switch on a device.

### ANALOG DISPLAY: MID-COMPLIANT

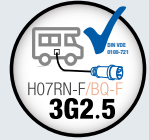
MIXO energy meters are only fitted with analog displays, which are compliant with specification of MID, the calibration authority. MIXO energy meters guarantee that measured values are recorded without risk of being manipulated.

### ELECTRICITY BILLING? NO PROBLEM WITH MIXO ENERGY METERS!

In accordance with Sect. 31 of the German Measurement and Calibration Act (MessEG), **only compliant meters may be used for electricity billing**. **MIXO energy meters** comply with the directives of the European Measuring Instruments Directive MID and are approved for **electricity billing**. The use of **non-compliant energy meters** for billing constitutes an **offence** punishable by a fine of up to EUR 50,000 (Sect. 60).



# MIXO energy meters



## Technical data

- With 2x 1.5m heavy-duty rubber power cable H07RN-F 3G2.5
- Tested in accordance with DIN EN 50525-2, DIN VDE 0620-2-1, IEC 60309, IEC EN 50470-1
- **IP44:** Resistant to foreign bodies and splash-proof, suitable for outdoor use



With analog display

## MIXO energy meters

- Housing made from shatterproof special plastic
- Integrated energy meter with analog display, **MID-compliant** 2014/32/EU
- Analogue display 5+1 digits, readable at any time
- Display for a maximum of 99.999,9 kWh, non-resettable
- Operating temperature from -25°C to +55°C

Fig.	Version	Cable length	PU	EAN	Art. no.
1	With shock-proof plug and shock-proof connector	2x 1.5 m black rubber power cable H07RN-F 3G2.5	1	4011160617478	61747
2	With CEE plug and CEE connector	2x 1.5 m black rubber power cable H07RN-F 3G2.5	1	4011160617485	61748



## MIXO CEE power combination units

The solution when there are  
not enough connections.

**BEST  
SELLER**



### MIXO EMS



Input 16 A, approx. 3.5 kW



CEE plug 230 V, 16 A, 3-pole with 'powerlight' voltage indicator and 1.5 m power cord H07RN-F 3G2.5

#### Output

1x shock-proof socket outlet 230 V, 16 A  
2x CEE sockets 230 V, 16 A, 3-pole



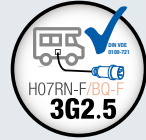
EAN 4011160604966

Art. no. 60496

# MIXO CEE power combination units

## Technical data

- Mobile distributors, space-saving and universally applicable
- Housing made from shatterproof special plastic
- Max. load 16 A / approx. 3.5 kW
- Tested in accordance with DIN VDE 0620-2-1, IEC 60309, DIN EN 50525-2
- **IP44**: protected against foreign bodies and splash-proof



## MIXO WESER

Input 16 A, approx. 3.5 kW



CEE plug 230 V, 16 A, 3-pole

### Output

3x shock-proof socket outlets 230 V, 16 A



EAN 4011160604980

Art. no. 60498

## MIXO SAALE

Input 16 A, approx. 3.5 kW



CEE plug 230 V, 16 A, 3-pole

### Output

2x shock-proof socket outlets 230 V, 16 A

1x CEE sockets 230 V, 16 A, 3-pole

1x CEE connector 230 V, 16 A, 3-pole with 'powerlight' voltage indicator and 1.5 m power cord H07RN-F 3G2.5

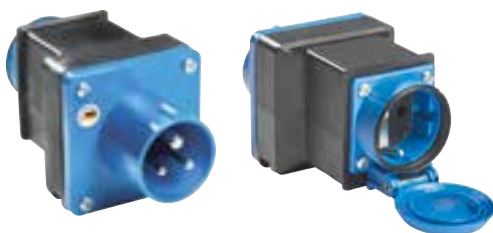


EAN 4011160604973

Art. no. 60497

## CEE caravan adapter

Input 16 A, approx. 3.5 kW



CEE plug 230 V, 16 A, 3-pole

### Output

1x shock-proof socket outlet 230 V, 16 A



EAN 4011160604942

Art. no. 60494

# Cable boxes



## Technical data

- Cable boxes made from sturdy, impact-resistant plastic in a modern design
- With practical handle
- Thermo switch included
- With PVC cable H05VV-F 3G1.5
- For easy winding in and out
- Tested in accordance with: EN 61242, DIN VDE 0620-2-1, DIN EN 50525-2
- **IP20**: indoor use

## Cable box for indoor use



- Housing with foldable crank
- With shock-proof angle plug 230 V, 16 A
- With 4 shock-proof socket outlets with increased touch protection

Version	Colour	EAN	Art. no.
5 m H05VV-F 3G1,5	Black/grey	4011160160806	16080
5 m H05VV-F 3G1,5	Black/blue	4011160160813	16081



- With shock-proof angle plug 230 V, 16 A
- With 4 shock-proof socket outlets with increased touch protection

Version	Colour	EAN	Art. no.
10 m H05VV-F 3G1,5	Black/grey	4011160160868	16086
10 m H05VV-F 3G1,5	Black/blue	4011160160943	16094

## CAMPING CABLE REELS

From page 3





# Multi socket outlets



## Technical data

- With illuminated on/off switch and self-locking safety flap lids
- With increased touch protection
- Suitable for wall attachment
- With heavy-duty rubber power cable H07RN-F 3G1.5
- Tested in accordance with DIN VDE 0620-2-1, IEC 60309, RN-F tested in accordance with DIN EN 50525-2
- **IP44**: protected against foreign bodies and splash-proof

## Multiple socket outlets with switch



- With **shock-proof plug** 230 V, 16 A

Version	Cable length	EAN	Art. no.
3-way	1.5 m black rubber power cable H07RN-F 3G1.5	4011160386039	38603
5-way	4.5 m black rubber power cable H07RN-F 3G1.5	4011160386053	38605



- With **CEE plug** 230 V, 16 A, 3-pole with «powerlight» voltage display

Version	Cable length	EAN	Art. no.
3-way	1.5 m black rubber power cable H07RN-F 3G1.5	4011160386183	38618
5-way	4.5 m black rubber power cable H07RN-F 3G1.5	4011160386190	38619

## Details overview:



All models with **shock-proof socket outlets** with safety flap lids and illuminated, splash-proof **on/off switch**. There are also pre-drilled holes for attachment.



No mutual obstruction between the connected plugs thanks to the **45° rotated socket inserts**.

# STECKY CEE power combination units



## Technical data

- Robust housing made from shatterproof special plastic
- With large, ergonomic carry handle
- Tested in accordance with DIN VDE 0620-2-1, IEC 60309, EN 61439-4, DIN EN 50525-2
- **IP44**: resistant to foreign bodies and splash-proof

## STECKY 11

- Dimensions (W x H x D): 230 x 417 x 220 mm
- No protective device



### Input 16 A, approx. 11 kW



CEE plug 400 V, 16 A, 5-pole  
with 2.5 m H07RN-F 5G2.5 heavy-duty rubber cable

### Output

4x shock-proof socket outlets 230 V, 16 A (2 per phase)  
2x CEE sockets 400 V, 16 A, 5-pole



EAN 4011160609602

Art. no. 60960

## STECKY 14

- Dimensions (W x H x D): 230 x 417 x 220 mm
- No protective device



**BEST  
SELLER**

### Input 16 A, approx. 3.5 kW



CEE plug 230 V, 16 A, 3-pole with 'powerlight' voltage indicator  
with 2.5 m H07RN-F 3G2.5 heavy-duty rubber cable



### Output

4x shock-proof socket outlets 230 V, 16 A  
2x CEE sockets 230 V, 16 A, 3-pole



EAN 4011160608698

Art. no. 60869

## Details overview:



Powder-coated metal frame with edge protection, for use as cable re-winder



Ergonomic carry handle, ideal for gripping with gloves. Velcro fastener for easily fixing the cable to the frame



STECKY DUO with two USB ports to recharge mobile phones, battery handlamps etc.

# STECKY DUO CEE power combination units

## Technical data

- Robust housing made from shatterproof special plastic
- With large, ergonomic carry handle
- Tested in accordance with DIN VDE 0620-2-1, IEC 60309, EN 61439-4, DIN EN 50525-2
- **IP44**: resistant to foreign bodies and splash-proof



## STECKY DUO 5

- Dimensions (W x H x D): 400 x 450 x 252 mm
- With protective device 1x FI 25 A, 30 mA, type A



### Input 16 A, approx. 3.5 kW



CEE plug 230 V, 16 A, 3-pole with 'powerlight' voltage indicator and 3.4 m H07RN-F 3G2.5 heavy-duty rubber cable



### Output

- 7x shock-proof socket outlets 230 V, 16 A
- 4x CEE sockets 230 V, 16 A, 3-pole
- 2x USB ports 5 V / 2.1 A



EAN 4011160609350

Art. no. 60935

## STECKY DUO 8

- Dimensions (W x H x D): 400 x 450 x 252 mm
- With protective device 1x FI 40 A, 30 mA, type A



### Input 16 A, approx. 11 kW



CEE plug 400 V, 16 A, 5-pole with 3.4 m H07RN-F 5G2.5 heavy-duty rubber cable

### Output

- 7x shock-proof socket outlets 230 V, 16 A
- 4x CEE sockets 230 V, 16 A, 3-pole
- 2x USB ports 5 V / 2.1 A



EAN 4011160609381

Art. no. 60938

# CEE plugs



## Technical data

- High-quality plug with impact-resistant housing
- Cable receptacle up to 3G2.5
- Tested in accordance with IEC 60309
- **IP44**: protected against foreign bodies and splash-proof

## PREMIUM CEE plugs with 'powerlight' voltage indicator



- High-quality plug with 'powerlight' voltage indicator: The LED glows red when the plug is connected to the power and is live.
- Cable receptacle with screw cap and cable sleeve support
- Lug for fixing the plug connector in place prevents the connection from accidentally pulling apart.

Version	PU	EAN	Art. no.
'powerlight' CEE plug 230 V, 16 A, 3-pole	1	4059948004737	61486

## CEE plugs

### Display model



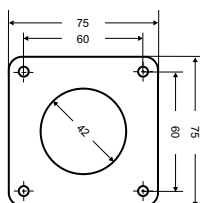
Version	PU	EAN	Art. no.
CEE plug 230 V, 16 A, 3-pole	5	4011160604706	60470
CEE plug 230 V, 32 A, 3-pole	1	4011160605901	60590



Version	PU	EAN	Art. no.
CEE angled plug 230 V, 16 A, 3-pole	1	4011160614811	61481



Version	PU	EAN	Art. no.
CEE wall-mounted inlet 230 V, 16 A, 3-pole	5	4011160604737	60473



- Flange size (HxW) in mm: 75x75
- Hole spacing (HxW) in mm: 60x60
- Installation depth in mm: 33

Version	PU	EAN	Art. no.
CEE panel-mounted socket 230 V, 16 A, 3-pole	1	4011160610141	61014

# CEE connectors

## Technical data

- High-quality connectors with impact-resistant housing
- Cable receptacle up to 3G2.5
- Tested in accordance with IEC 60309
- **IP44**: protected against foreign bodies and splash-proof



## PREMIUM CEE connector with 'powerlight' voltage indicator



- High-quality connectors with 'powerlight' voltage indicator:  
The LED glows red when the connector is connected to the power and is live.
- With self-closing flap lid and integrated level for opening with one hand
- Cable receptacle with screw cap and cable sleeve support

Version	PU	EAN	Art. no.
'powerlight' CEE connector 230 V, 16 A, 3-pole	1	4059948004720	61487

## CEE connectors

### Display model



Version	PU	EAN	Art. no.
CEE connector 230 V, <b>16 A</b> , 3-pole	5	4011160604713	60471
CEE connector 230 V, <b>32 A</b> , 3-pole	1	4011160605925	60592



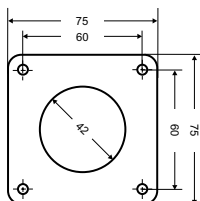
Version	PU	EAN	Art. no.
CEE angled connector 230 V, 16 A, 3-pole With self-locking flap lid	5	4011160604751	60475



Version	PU	EAN	Art. no.
CEE angled connector 230 V, 16 A, 3-pole With integrated shook-proof socket outlet	5	4011160604744	60474



Version	PU	EAN	Art. no.
CEE wall-mounted socket outlet 230 V, 16 A, 3-pole	5	4011160604720	60472



- Flange size (HxW) in mm: 75x75
- Hole spacing (HxW) in mm: 60x60
- Installation depth in mm: 33

Version	PU	EAN	Art. no.
CEE panel-mounted socket outlet 230 V, 16 A, 3-pole	1	4011160604805	60480

# CEE caravan power supply inlets

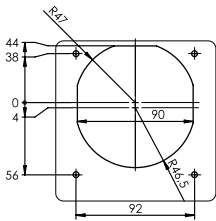
## Technical data

- High quality power inlet for self-assembly
- CEE 230 V, 16 A, 3-pole
- Tested in accordance with IEC 60309
- **IP44**: protected against foreign bodies and splash-proof



## CEE caravan power supply inlets

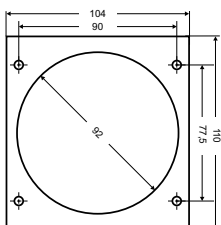
**NEW**



- Housing in elegant design **with magnetic closure**
- CEE power supply inlet 230 V, 16 A, 3-pole with flap lid
- All visible parts made of UV-proof plastic
- Lid opening angle: 180°
- Flap lid with magnetic closure
- High fire protection class 850°C, self-extinguishing plastic
- Large connection space
- Self-opening safety latch (CEE connector)
- Low installation height
- Flange size (HxW) in mm: 145x130
- Hole spacing (HxW) in mm: 94x92
- Installation depth in mm: 82

Colour	PU	EAN	Art. no.
White	1	4011160624704	62470
Black	1	4011160624711	62471
Anthracite grey	1	4011160624728	62472

**BEST SELLER**



- CEE power supply inlet 230 V, 16 A, 3-pole **with flap lid**
- Flange size (HxW) in mm: 110x104
- Hole spacing (HxW) in mm: 90x77.5
- Installation depth in mm: 82

Colour	PU	EAN	Art. no.
White	1	4011160604843	60484
Anthracite grey	1	4011160614927	61492
Black	1	4011160614934	61493

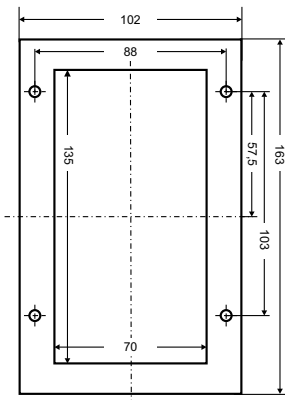
# CEE caravan power supply inlets

## Technical data

- High quality power inlet for self-assembly
- CEE 230 V, 16 A, 3-pole
- Tested in accordance with IEC 60309
- **IP44**: protected against foreign bodies and splash-proof

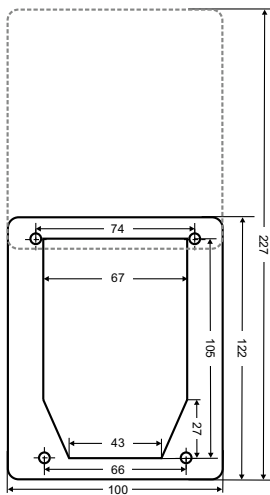


## CEE caravan power supply inlets



- Foldable CEE power supply inlet 230 V, 16 A, 3-pole **with flap lid**
- Flange dimension (HxW) in mm (closed): 163x102
- Hole spacing (HxW) in mm: 103x88
- Installation depth in mm: 62

Colour	PU	EAN	Art. no.
White	1	4011160614637	61463

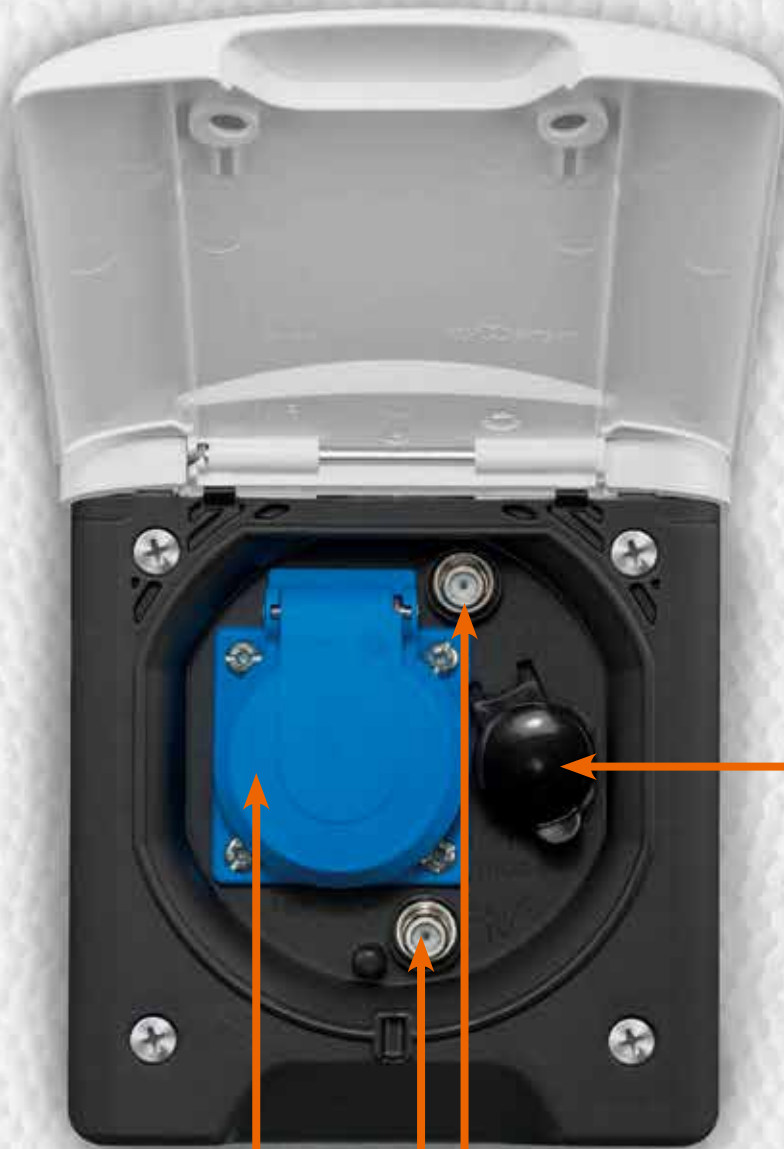


- CEE power supply inlet 230 V, 16 A, 3-pole **with sliding lid**
- Flange dimension (HxW) in mm (closed): 112x100
- Flange dimension (HxW) in mm (open): 227x100
- Hole spacing (HxW) in mm: 74/66x105
- Installation depth in mm: 119

Colour	PU	EAN	Art. no.
White	1	4011160614804	61480
Black	1	4011160614620	61462

# MULTI-FUNCTION FLANGED SOCKET

**NEW**



12 V DC socket

Shock-proof socket outlet with flap lid

2x SAT sockets





# Multi-function flanged socket

## Technical data

- High-quality flanged socket for self-assembly
- Tested in accordance with DIN VDE 0620
- **IP44:** protected against foreign bodies and splash-proof

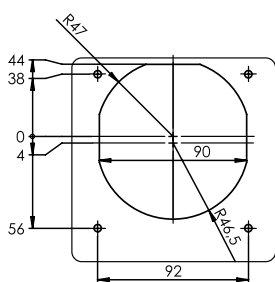


**NEW**

- Multi-function flanged socket in elegant design
- Flap lid with magnetic closure
- Lid opening angle: 180°
- All visible parts made of UV-proof plastic
- High fire protection class 850°C, self-extinguishing plastic
- Connections:
  - 1x shock-proof socket outlet 230 V, 16 A, with flap lid,
  - 2x SAT sockets,
  - 1x 12 V DC socket
- With large connection space
- Low installation height
- Flange size (HxW) in mm: 145x130
- Hole spacing (HxW) in mm: 94x92
- Installation depth in mm: 66



Colour	PU	EAN	Art. no.
White	1	4011160624735	62473
Black	1	4011160624742	62474
Anthracite grey	1	4011160624759	62475



## Plugs and connectors



- For self-assembly
- Cable receptacle up to 3G1.5
- **IP20**: suitable for indoor use

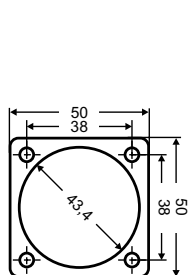
Versions for indoor use	PU	EAN	Art. no.
PVC shock-proof plug 230 V, 16 A, black	1	4011160622229	62222
PVC shock-proof connector 230 V, 16 A, black	1	4011160622250	62225



- For self-assembly
- Cable receptacle up to 3G2.5
- **IP44**: suitable for outdoor use

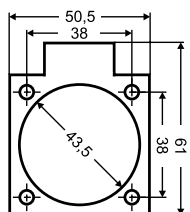
Versions for outdoor use	PU	EAN	Art. no.
Rubber shock-proof plug 230 V, 16 A, black	1	4011160604102	60410
Rubber shock-proof connector 230 V, 16 A, black	1	4011160604157	60415

## Flanged sockets



- Flange size (HxW) in mm: 50x50
- Hole spacing (HxW) in mm: 38x38
- Installation depth in mm: 28
- **IP20**: suitable for indoor use

Versions for indoor use	PU	EAN	Art. no.
Shock-proof socket outlet 230 V, 16 A, grey	1	4011160450846	45084
Shock-proof socket outlet 230 V, 16 A, black	1	4011160450815	45081

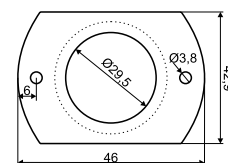


- 2 USB socket 5 V/2.1 A DC
- Flange size (HxW) in mm: 61x50.5
- Hole spacing (HxW) in mm: 38x38
- Installation depth in mm: 34
- **IP54**: suitable for outdoor use

Version 230 V	PU	EAN	Art. no.
USB flanged socket with two USB ports, blue	1	4011160450891	45089



- Delivery including 0.6 m earth cable and positive pole (with glass fuse), both connection wires with eyelet
- 2 USB sockets 1x 5 V/1 A and 1x 5 V/2.1 A
- with protective cap
- Flange size (HxW) in mm: 43x61
- Hole spacing in mm: 48
- Installation depth in mm: 34
- **IP20**: suitable for indoor use



Version 12 V	PU	EAN	Art. no.
USB flanged socket with two USB ports, white	1	4011160614644	61464
USB flanged socket with twin USB socket, black	1	4011160614996	61499

## Fuses



- For inside caravan wall-mounting
- Dimensions (HxWxD) in mm: 131x50x80

Fig.	Version	PU	EAN	Art. no.
1	<b>LS MCB C10A</b> <ul style="list-style-type: none"> <li>• in a white plastic housing</li> <li>• MCB switching on 2 poles, 230 V/10 A with LS C10 A, 2-pole</li> </ul>	1	4011160615641	61564
2	<b>Residual current device</b> <ul style="list-style-type: none"> <li>• in a white plastic housing</li> <li>• FI 25 A, 30 mA, 2-pole, type A</li> </ul>	1	4011160615658	61565
3	<b>RCD combination fuse and LS MCB</b> <ul style="list-style-type: none"> <li>• in a white plastic housing</li> <li>• 230 V/16 A, 30 mA, 2-pole, type A, C characteristic</li> </ul>	1	4011160615696	61569

## Battery adapter with cigarette lighter connector



- Allows the connection of all types of equipment through the cigarette lighter directly with the battery (12 V or 24 V)
- 1 m 2x0.75 mm<sup>2</sup> insulated power cord with coloured positive and negative battery terminals

Version	PU	EAN	Art. no.
Battery adapter with cigarette lighter connector	1	4011160423055	42305

## Connecting cords



- For the wiring of caravans, trailers and motorhomes

Version	Colour	PU	EAN	Art. no.
Linear meter PVC cable H05VV-F 7x1.0	Black	1	4011160708992	70899
2 m PVC cable H05VV-F 7x1.0	Black	1	4011160718922	71892
5 m PVC cable H05VV-F 7x1.0	Black	1	4011160718953	71895
10 m PVC cable H05VV-F 7x1.0	Black	1	4011160718908	71890
5 m H07V-K 1.5 mm <sup>2</sup>	Blue	1	4011160300400	30040
5 m H07V-K 2.5 mm <sup>2</sup>	Blue	1	4011160300424	30042
5 m H07V-K 6.0 mm <sup>2</sup>	Blue	1	4011160300455	30045
5 m H07V-K 1.5 mm <sup>2</sup>	Red	1	4011160300417	30041
5 m H07V-K 2.5 mm <sup>2</sup>	Red	1	4011160300431	30043
5 m H07V-K 6.0 mm <sup>2</sup>	Red	1	4011160300448	30044
5 m PVC twin cable H03VH-H 2x0.75 mm <sup>2</sup>	White	1	4011160300509	30050
Linear meter heavy-duty rubber cable H07RN-F 3G2.5	Black	1	4011160100185	10018
50 m heavy-duty rubber cable H07RN-F 3G2.5	Black	1	4011160100208	10020

# Caravan adapters

## We have the solution!

**The problem:** Your trailer connector has a 13-pole connection but your trailer has a 7-pole connection?

**The solution:** With our plugs, connectors, and adapters, you can connect all common connections to your trailer socket.



## Caravan adapters



- Connection of the 13-pole sockets to 7-pole trailer plug adapter.
- No need for dragging cables any longer.

Version	PU	EAN	Art. no.
Universal short adapter	1	4011160604690	60469



- Connection of the 13-pole sockets to 7-pole trailer plug adapter.
- No need for dragging cables any longer.

Version	PU	EAN	Art. no.
Universal mini adapter	1	4011160604393	60439

1



- Round, with flap lid and contact for rear fog light
- For mounting

Fig.	Version	PU	EAN	Art. no.
1	13-pole panel-mounted socket	1	4011160614743	61474
2	7-pole panel-mounted socket	1	4011160614736	61473

2



1



- Connects trailer road lights to towing vehicle
- With screw connection for cable diameters from 8.5 to 10 mm
- Designed in accordance with ISO 1724/ISO 11446

Fig.	Version	PU	EAN	Art. no.
1	Plug 7-pole	1	4011160604621	60462
2	Plug 13-pole	1	4011160604645	60464

2



1



- Connects trailer road lights to towing vehicle
- With screw connection for cable diameters from 8.5 to 10 mm
- Designed in accordance with ISO 1724/ISO 11446

Fig.	Version	PU	EAN	Art. no.
1	Connector 7-pole	1	4011160604638	60463
2	Connector 13-pole	1	4011160604669	60466

2





## Caravan adapter cords



### Caravan adapter cords



- With a 0.6 m automotive PVC cable 7×1 mm<sup>2</sup>

Fig.	Version	PU	EAN	Art. no.
1	7-pole connector and 13-pole plug	1	4011160604676	60467
2	13-pole connector and 7-pole plug	1	4011160604683	60468



- With 1 m automotive TPU cable 7×1

Version	PU	EAN	Art. no.
Retractable spiral lead to connect 13-pole plug to 7-pole socket	1	4011160614750	61475



- With 2 m automotive TPU cable 7×1

Version	PU	EAN	Art. no.
7-pole connector and 7-pole plug	1	4011160614767	61476



- With 3 m TPU spiral vehicle cable 12×0.75 + 1×1

Version	PU	EAN	Art. no.
13-pole connector and 13-pole plug	1	4011160624766	62476



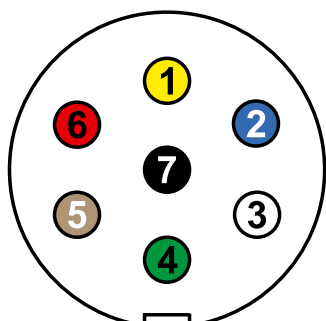
## Caravan tester set



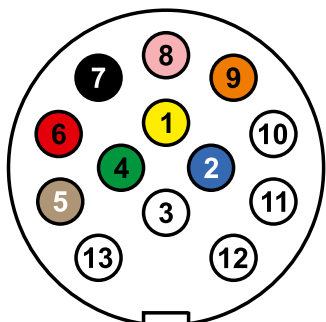
- Set consists of:  
Caravan tester with 7-pole plug and 7-pole connector,  
a 13-pole on 7-pole adapter and a 7-pole on 13-pole adapter
- Testing of the wiring circuits on the car or trailer
- Handy test device for finding cable line defects
- LED Indicators will show green when function is tested and correctly wired, or red if a fault is present
- Applicable for all 7-pole and 13-pole plugs and connectors
- Internal battery supply, no external power source necessary
- Operation with 9 V battery (not included)

Version	PU	EAN	Art. no.
Caravan tester set	1	4011160614682	61468

## Socket wiring diagram



7-pole (socket)



13-pole (socket)

Sockets mirror-inverted

PIN number	Label	Colour	7-pole	13-pole
1	L	Yellow	Left turn	Left turn
2	54 g	Blue	Fog light	Fog light
3	31	White	Earth	Earth
4	R	Green	Right turn	Right turn
5	58R	Brown	Right tail/side light	Right tail/side light
6	54	Red	Brake/stop lights	Brake/stop lights
7	58L	Black	Left tail/side light	Left tail/side light
8	ZR	Grey/pink		Reversing light
9	30	Brown/blue Orange		12 V permanent from batt.
10				12 V ignition on
11				Spare
12				Spare
13	31	Black/white White/red		Earth

## Battery-operated LED headlamp HD 150



Size-adjustable headband



Forehead pad

- Powerful LED with a lifespan of over 50,000 hours
- Luminous intensity adjustable in two levels, with on/off switch
- With size-adjustable headband and forehead pad
- Li-poly storage battery 3.7 V/800 mAh with charge status display
- Charging time: approx. 3 hours
- Operating time: up to 4 hours
- Includes 5 V/1 A USB charger

Version	Colour temperature	PU	EAN	Art. no.
2 watt approx. 75/150 Lumen	6,000 K (daylight)	1	4011160428234	42823

## LED torch XT1



110 mm

- Powerful LED in a robust die-cast aluminium housing
- 2 illumination levels and emergency flashing function
- Operating time at full output: approx. 6 hours
- Operating time at half output: approx. 10 hours
- Operating time using emergency flashing function: approx. 12 hours
- Includes 3 x AAA batteries

Version	Colour temperature	PU	EAN	Art. no.
1 watt approx. 70-110 Lumen	6,400 K (daylight)	1	4011160428043	42804

## Battery-operated LED handlamp



280 mm

- Special LED beam and 3 additional LEDs in the lamp head
- Rubber-coated housing with folding hook for suspending
- 4 magnets on rear
- Li-ion battery 3.7 V/2,000 mAh with charge status display
- Charging time: approx. 3 hours
- Operating time: up to 4 hours
- Includes USB charger (5 V/1 A)
- 3 positions possible: ON - lamp head only - OFF

Version	Colour temperature	PU	EAN	Art. no.
2 watt approx. 200/20 Lumen	6,000 K (daylight)	1	4011160428203	42820

# CLEVER SOLUTION FOR LIMITED STORAGE SPACE.

## SOLARLINE LED FLOODLIGHT

**NEW**

LED floodlight  
for connection at a  
12 V car battery.





**NEW**



## Solarline LED floodlight with additional 12 V auxiliary battery connection

- Mobile LED floodlight with solar panel for sunlight charging . Alternatively the floodlight could be charged through car battery.
- Included: Floodlight, solar panel and bracket, solar panel fixings, 2x remote control and 4x batteries AAA, connecting cable for car battery
- Floodlight with max. operating time approx. 4.5 hours, with timer function, dimmable in different levels
- Basic setting: automatic power-ON during darkness, automatic power-OFF during daylight
- LED beam angle: 120°
- 3.5 m connecting cable between light and solar panel for solar operation
- Alternatively 4.5 m connection cable with battery terminals for connecting a 12 V car battery
- All cables equipped with SAE-connectors
- Working temperature: -25 °C to 60 °C
- 2 infrared remote controls (up to 8-10m range) included with 2x AAA batteries per remote control.
- **IP65:** dust-tight and jet-water-proof

Model	Luminous flux	Colour temperature	Battery LiFePo4 (Lithium Fer)	Charging time	EAN	Art. no.
25 watt	1500 lumen	4000 K (neutral white)	6,4 V 6000 mAh	approx. 6 hours	4011160469817	46981
60 watt	4000 lumen	4000 K (neutral white)	9,6 V 10000 mAh	approx. 8 hours	4011160469824	46982

## Solarline LED floodlight with motion sensor



- Swivelling, lockable floodlight with die-cast aluminium housing
- Motion sensor: Sensor 180°
- Detection zone: up to 12 metres
- Adjustable from 10 seconds to 6 minutes
- Adjustable twilight and sensitivity switch
- Solar panel (3.5 W/14.5 V) with Li-ion battery (7.4 V/1,800 mAh)
- Charging time: approx. 10 hours
- Operating time: approx. 4 hours
- 3 m connecting cable between light and solar panel

Version	Colour temperature	PU	EAN	Art. no.
10 watt approx. 550 Lumen	5,000 K (neutral white)	1	4011160469787	46978

# Order form

Art. no. as - Schwabe	Name	Quantity	Purchase price

Company: \_\_\_\_\_

Postal code, town: \_\_\_\_\_

First name: \_\_\_\_\_

Telephone: \_\_\_\_\_

Surname: \_\_\_\_\_

Fax: \_\_\_\_\_

Street: \_\_\_\_\_

Email: \_\_\_\_\_

Date, place: \_\_\_\_\_

Signature: \_\_\_\_\_

Company stamp

Adapter  
Art. no. 60494

25 m extension cable  
Art. no. 61409

Adapter cord  
Art. no. 61406

Energy meter  
Art. no. 61748

Cable reel  
Art. no. 22176

STECKY power combination unit  
Art. no. 60869

Multi socket outlet  
Art. no. 38605

Cable reel  
Art. no. 12270

Extension cable  
Art. no. 61403

Wall-mounted socket outlet  
Art. no. 60472

MIXO EMS power combination unit  
Art. no. 60496

Cable reel  
Art. no. 12274

Bag for cable reels  
Art. no. 12279

Cable reel  
Art. no. 10176

STECKY DUO power combination unit  
Art. no. 60935

The right power supply for  
**CAMPING • CARAVAN • MARINA**

# SIMPLY DROP ANCHOR AT YOUR FAVOURITE SPOT



## ENJOY THE MOMENT ON BOARD AS WELL – WITH THE RIGHT POWER SUPPLY FROM AS-SCHWABE

During stays in port and at the shipyard, use our products to supply the onboard power system via shore power.

### We provide:

- Plugs and connectors **approved for** shore power connection
- **CEE 230 V plugs and connectors** protected against moisture
- **Standard-compliant cords** with 2.5 mm<sup>2</sup> cross-section
- **Adapters** for connecting electrical devices to the power supply
- **Multiple socket outlets** for connecting various loads to one socket



Made in Germany



More products  
inside